



## ST ALOYSIUS' COLLEGE

### **Substance Misuse Policy**

#### **The aim of this policy is to:**

- to act to protect children at school from misuse (by themselves or others) of harmful substances.
- to educate pupils about substance misuse
- to uphold the law

The College will respond to instances of substance misuse by pupils in a manner that balances discipline with Pastoral Care. Each case will be carefully considered in the light of the child's individual circumstances and their best interests.

#### **Prevention**

The central aim of this policy is to keep substances out of St Aloysius' College. We aim to do so by means of education, pastoral care, detection of users and sanctions where appropriate.

#### **Education**

- To enable pupils to make healthy and informed choices by increasing knowledge, challenging attitudes, developing and practising decision-making skills.
- To provide accurate information about substances e.g. tobacco, alcohol and other drugs.
- To increase understanding about the implications and possible consequences of use.
- To widen understanding about health related and social issues.
- To educate pupils that the use of illegal drugs is a criminal offence.

#### **Pastoral care**

- To provide a supportive regime for pupils, where appropriate.
- To have clear procedures for responding to drug-related incidents and applying sanctions, if appropriate.
- To enable pupils to identify sources of appropriate personal support.

#### **Detection**

- Every report of a substance incident will be followed up and investigated by the Depute and referred to the Head Master for decision.
- Where a pupil is found in possession of drugs, whether for either personal use or with suspicion to supply, the Police will automatically be informed.

The following flow charts explains the sequence of events if substance misuse occurs in the College.

**Smoking**

Smoking tobacco on or off College campus, on College activities, travelling to and from school or at any time when in uniform during.



Pupil should expect to be suspended



Support/advice given

**Alcohol**

Bringing alcohol onto or consuming alcohol within the College campus, on a College activity or whilst representing the College



Pupils should expect to be suspended



Advice for pupil and support if required

**Other Illegal Drugs e.g. Ecstasy, Cannabis, Psycho-active substances**

Possession, possession with intent to supply or being concerned with the supply or holding of any illegal drugs in the College, or on an associated College activity or whilst representing the College



Each incident investigated by the Depute and referral to Head Master for decision. Police informed.

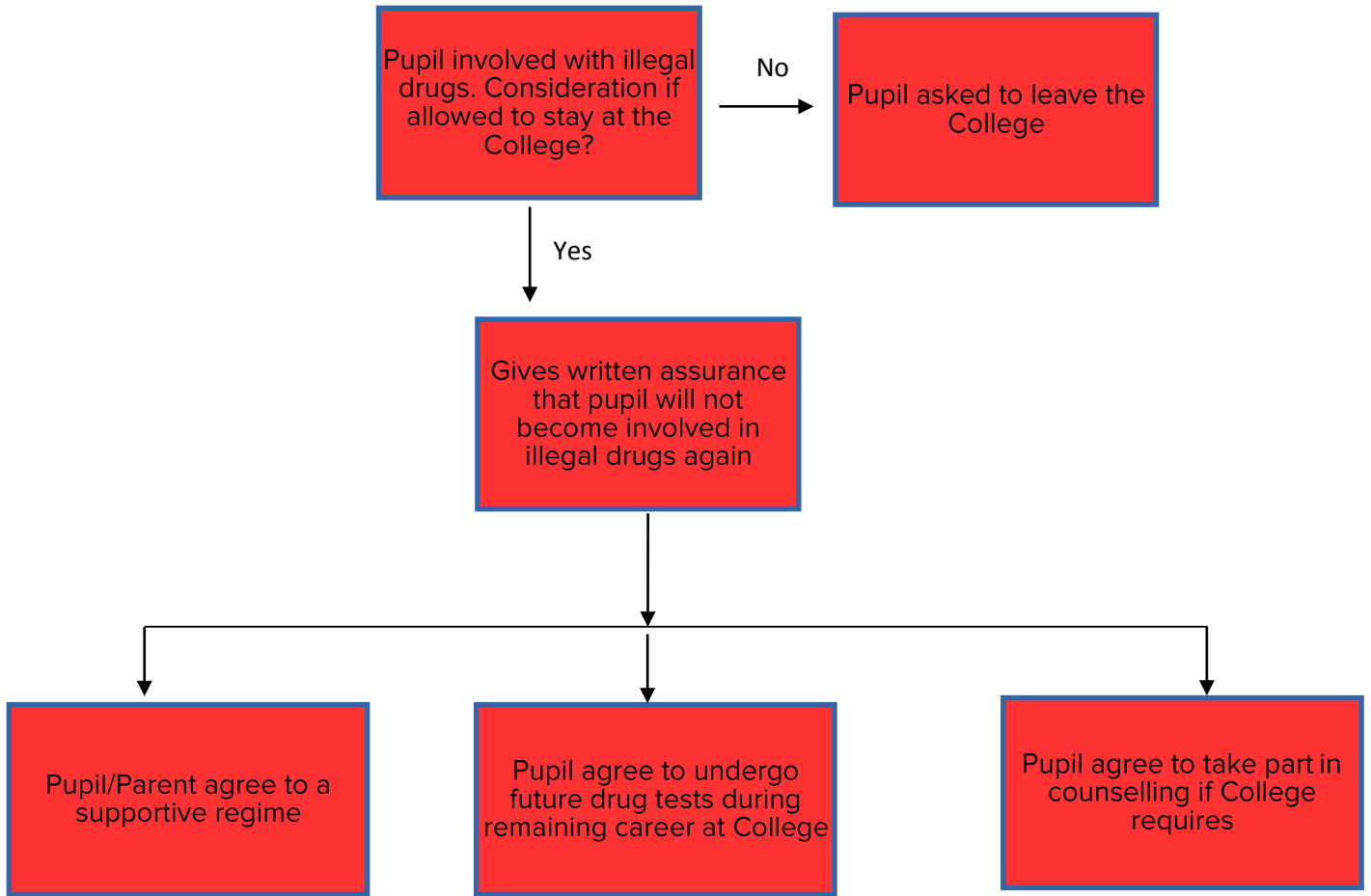


Pupil supportive regime if appropriate



Pupil may be asked to leave the College.

### Mitigating circumstances – Head Masters' Decision



## **Definitions:**

### **Definition of a Drug**

Drugs are those that are legal, such as alcohol, tobacco and solvents, illegal drugs such as cannabis, ecstasy, psychoactive substances, heroin, crack/cocaine and LSD. These are examples and are not exhaustive.

Over-the-counter and prescription medicines used improperly, which can include sleeping tablets and slimming tablets.

All legal drugs when misused including volatile substances and solvents, Ketamine, Khat and alkyl nitrites.

Drugs which are misused to enhance performance (for example analgesics or steroids).

***The Head Master reserves the right to react to the emergence of new substances and changing circumstances as they occur.***

### **Definition of a Drug Related Incident involving:**

- a pupil who is suspected of being under the influence of a drug.
- finding drugs or related paraphernalia on school premises, travelling to and from the College, on school activities or on an associated school activity.
- possession of drugs by an individual on school premises, travelling to and from the College, on school activities or on an associated school activity.
- use of drugs by an individual on school premises, travelling to and from the College, on school activities or on an associated school activity.
- supply of drugs on school premises, travelling to and from the College, on school activities or on an associated school activity.
- individuals disclosing information about their drug use (supportive regime if appropriate and Police contact if appropriate).
- reports of drug possession, supply or drug use outside school time (supportive regime if appropriate and Police contact if appropriate).

### **Procedures that must be following for Drug Related Incidents**

- Any pupil selling or distributing drugs or otherwise actively encouraging their possession or consumption by others will be expelled.
- Anyone caught possessing or consuming illegal drugs while under the College's jurisdiction loses any right to immediate membership of the College and must expect expulsion to be a very strong possibility.
- In some cases, there may be mitigating circumstances; if so, they will be carefully considered by the Head Master.
- The Head Master will consult the Police about the possession, consumption or supply of an illegal drug, since it carries the possibility of being a criminal offence.
- If there is evidence that a pupil has been involved with illegal drugs he or she may be allowed to stay in the College provided that he or she:
  - Gives a written assurance to the Head Master and to his/her parent(s) that he/she will not become involved with illegal drugs again and agrees to a supportive regime.
  - Agrees to undergo the random drug tests at various times during his/her remaining College career.

- Agrees to take part in counselling if the College requires.

### **Reputation**

In the event of the College' reputation being brought into disrepute it will be the College's qualified right to invoke its full disciplinary procedures. Any subsequent drugs abuse, including a positive test result, will result in automatic permanent exclusion.

Policy updated: November 2016

Policy update approved by ARG Committee: November 2016

Policy update approved by GB: 6<sup>th</sup> December 2016

Next review due: November 2017

This policy will be annually reviewed by: Isabelle Erskine